

P. 13

DS

Ateneo de Davao

**DS
ADDU I
P-19**

**COLLEGE LIBRARY
ATENEO DE DAVAO**



Bulletin of Information

MEMBER, PHILIPPINE ACCREDITING
ASSOCIATION OF SCHOOLS, COLLEGES
& UNIVERSITIES (PAASCU)

TABLE OF CONTENTS

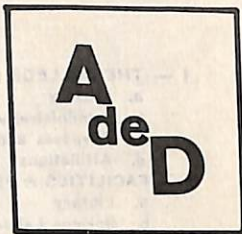
P20

PAGE

| | |
|---|-------|
| I — THE COLLEGE IN BRIEF | 1-3 |
| a. History | |
| b. Administrative Control | |
| c. Purposes and Objectives | |
| d. Affiliations | |
| II — FACILITIES & SERVICES | 3-7 |
| a. Library | |
| b. Science Laboratories | |
| c. Speech Laboratory | |
| d. Textbook Department | |
| e. Health Clinic | |
| f. Credit Union | |
| g. Canteen | |
| h. Educational Media Office | |
| i. PUAVC Regional Center for Southern Mindanao | |
| j. Regional Science Teaching Center (RSTC) | |
| k. Science Materials Department Center (SMDC) | |
| l. Alumni | |
| III — COLLEGE LIFE & ACTIVITIES | 8-12 |
| a. Guidance Program | |
| b. Religious Services | |
| c. Placement Services | |
| d. Student Activities | |
| f. Athletics | |
| g. Admissions | |
| h. Orientation | |
| i. Honors Program | |
| j. Grant-in-Aid | |
| k. Tuition Fees | |
| l. Academic Standard | |
| m. Summer Session | |
| IV — EDUCATION PROGRAM | 13-15 |
| a. Course Offering | |
| b. Graduate School | |
| c. Admission | |
| d. Degree Requirements | |
| e. College of Law | |
| V — BACHELOR OF LAWS (LL.B.) | 16 |
| VI — COLLEGE OF ARTS & SCIENCES | 17 |
| VII — BACHELOR OF ARTS (A.B.) | 18 |
| VIII — BACHELOR OF SCIENCE IN EDUCATION (B.S.E.) | 19 |
| IX — BACHELOR OF SCIENCES MAJOR IN TEACHING OF MATHEMATICS | 20 |
| X — BACHELOR OF SCIENCE MAJOR IN TEACHING OF CHEMISTRY | 21 |
| XI — BACHELOR OF SCIENCE MAJOR IN NATURAL SCIENCE (B.S.N.S.) | 22 |
| XII — BACHELOR OF SCIENCE MAJOR IN BIOLOGY | 23 |
| XIII — BACHELOR OF SCIENCE MAJOR OF TEACHING BIOLOGY | 24 |
| XIV — BACHELOR OF SCIENCE MAJOR IN CHEMISTRY | 25 |
| XV — TWO-YEAR PRE-NURSING COURSE | 26 |
| XVI — A.B. — A.S.B.A./B.S.C. 5 YEAR PROGRAM | 27 |
| XVII — BACHELOR OF SCIENCE IN COMMERCE MAJOR IN ACCOUNTING (B.S.C.) | 28 |
| XVIII — BACHELOR OF SCIENCE IN BUSINESS ADMINISTRATION (B.S.B.A. (B.S.B.A.) Major: Banking & Finance | 29 |
| XIX — B.S.B.A. MANAGEMENT MAJOR | 30 |
| XX — HIGH SCHOOL GRADE SCHOOL | 31 |

VERTICAL
FILE
FOR REFERENCE ONLY
COLLEGE LIBRARY
ATENEO DE DAVAO

THE COLLEGE IN BRIEF



HISTORY

Ateneo de Davao is one of the nine schools and colleges in the Philippines conducted by the Society of Jesus. The Ateneo traditions are enriched with four centuries of educational experience, for the Jesuit Order, founded in 1534 by Ignatius of Loyola, quickly began to conduct institutions of higher learning in all parts of the world.

The Ateneo de Davao was founded in 1948 at the request of Bishop Luis del Rosario, S.J. of Zamboanga. The Jesuit Fathers took over the former St. Peter's, a parish grade school and high school. A wooden building was constructed on a six-hectare lot in Matina and the Ateneo opened its first classes in June of 1948 with Fr. Theodore Daigler, S.J. as rector. In 1951 Ateneo leased a site on Jacinto Street to start its College Department, at first offering seven courses: Commerce, Liberal Arts, Associate in Arts, Pre-Law, E.T.C. and Secretarial.

In 1961 we completed a 5-storey concrete building on the Jacinto property. A residence for the Jesuit Fathers was added in 1965, a High School building in 1967 and a Grade School building in 1969. An Administrative-Library building is next on the planning board.

Over the past 15 years, the Ateneo de Davao has achieved a certain degree of competence in the field of science and in 1962, with modern laboratory facilities, it started conducting summer institutes for science teachers which, through the support of some national and international organizations, led to the establishment of the Regional Science Teaching Center (RSTC) for Eastern Mindanao.

Recognizing the continuous effort to grow, the science complex, the library materials of the Ateneo de Davao, the Philippine Accrediting Association of Schools, Colleges and Universities (PAASCU) granted temporary accreditation in 1968. Final accreditation is expected in March 1972. The Ateneo de Davao is pledged to continuing growth in loyalty to its objectives as it strives to meet the needs of the Davao community.

The main campus of the College is composed of six buildings situated at Jacinto Street. The imposing 5-storey Science Building known as Canisius Hall is in the middle. Bellarmine Hall houses the Finance Department, the Guidance Counsellors, a few classrooms and the canteen. The Science Materials Development Center financed by FAPE and the Military Science and Tactics buildings are located near C. M. Recto Street. Behind Canisius Hall is the College chapel. Further ahead is the Loyola House.

The High School and the Grade School buildings completed in 1967 and 1969 are located at Matina, a few minutes drive from the poblacion.

ADMINISTRATIVE CONTROL

The Ateneo de Davao is a private educational institution incorporated under the laws of the Philippines and conducted by members of the Society of Jesus (Jesuit Fathers) in the Catholic Church.

PURPOSES & OBJECTIVES

A Jesuit school in Southeastern Mindanao, the Ateneo de Davao strives to produce leaders for its developing community. Certain emphases, therefore, guide the formation of Ateneo students: the Jesuit tradition of a well-rounded education for leadership service in the communities from which the Ateneo students come and in which they spend their lives —

1. The Jesuit Tradition:

- a) **Well-rounded education** — The Ateneo curriculum seeks to integrate into the student's life the learning found in Theology, Philosophy, Language and Literature, the Social and Natural Sciences. The program of studies stresses training in the ability to think, to judge, to make decisions, to speak and write correctly and effectively, that is — to communicate. The ultimate goal of Ateneo education is a love of God manifested in a commitment to the Christian service of others in and through the professions into which these courses guide them.
- b) **Leadership Service** — The Ateneo program of studies aims at developing leaders — men who influence others to act for the common welfare although not necessarily achieving positions of command; men who, conscious of their duties to Filipino society, act to create and develop in their community a realization of Christian values.

2. The community origins of the Ateneo student.

The Ateneo de Davao is a living part of a developing region of the Philippines. It seeks to change attitudes towards the effective use of the resources of Mindanao in order to improve the living conditions of the growing population of this area.

The Ateneo desires to foster:

1. A sensitivity to the diversity of cultures at work in the country and the region, and to the unequal and unjust distribution of the cultural, social and economic benefits in our midst.

2. A spirit of initiative in the development of small and medium scale industry by well-trained managers, technologists, marketing specialists and scientists.

3. Proper attitudes toward the training and treatment of laborers and employees with profit-sharing as an incentive to greater cooperation.

4. Cooperation between investors, landowners, and public administrators for the civic improvements and public services needed to support development in industry, city planning and housing.

5. An attitude of service in those who will enter governmental agencies and the ability to develop a responsible bayanihan spirit among those they serve.

This vision of a life of mature and dedicated Christian service, this preparation of the young to reflect in themselves and to imprint upon society the image of God, the Ateneo shares with students of other faiths who are welcome in this Catholic College.

AFFILIATIONS

The College is approved by the Bureau of Private Schools, Department of Education.

To stimulate active interest in educational matters the College maintains membership in the following educational organizations: Philippine Accrediting Association of Schools, Colleges & Universities, the Catholic Educational Association of the Philippines, Mindanao Educational Conference, Regional Science Teaching Centers, East Asian Jesuit Educational Conference, International Federation of Catholic Universities (Rome), Jesuit Educational Association of the Philippines, Philippine Association for Graduate Education, Mindanao Consortium of Ateneos, Davao Association of Colleges and Schools, Philippine Universities Audio-Visual Center, Institute of Development for Educational Administration, Educational Testing Service (U.S.) and the Coordinating Council of Private Educational Association.

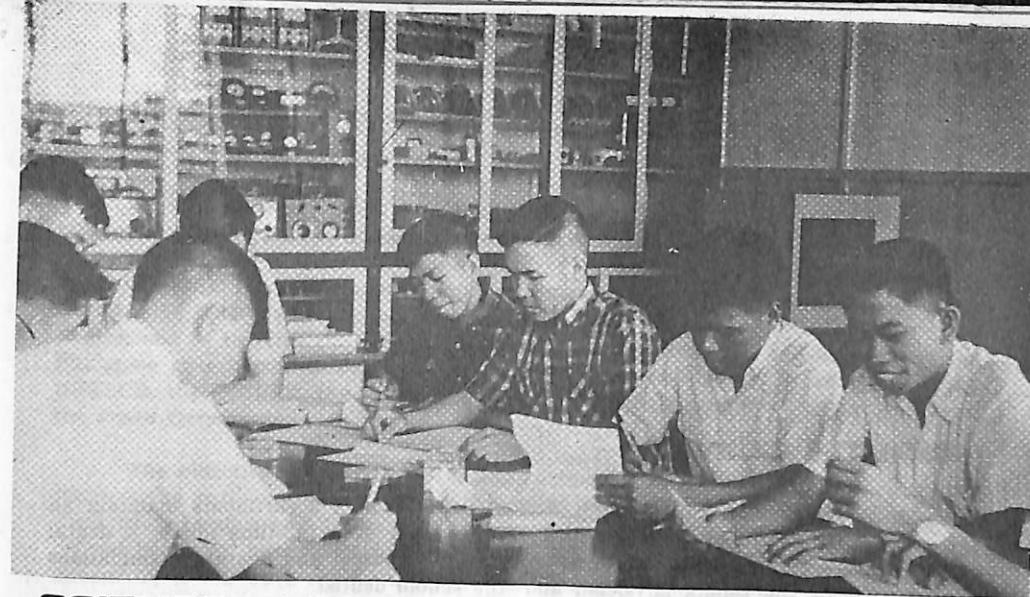
The College is also represented in other associations and societies through the individual membership of its faculty.

Facilities & Services

LIBRARY

The College library comprises the Undergraduate College and Graduate Education collections, and a separate Law collection totalling a modest 15,000 volumes. It is located on the second floor of Canisius Hall, a five-storey classroom building, and has a seating capacity of 10% of the enrollment. Study space offers a choice of standard tables and carrels for private study. The open stacks system encourages students to develop that familiarity with books which is essentially a part of true liberal education.

* The aim of the library is to build a well-selected collection for the instruction support of the predominantly undergraduate enrollment while at the same time providing for the Graduate School. Since our collection is still limited, clientele is restricted to the student body and faculty.



SCIENCE LABORATORIES

The College has a Physics laboratory, a Biology laboratory and a Chemistry laboratory each fully equipped to support the curricular programs of the Natural Science Division. Research facilities are also available.

SPEECH LABORATORY

A speech laboratory will be available to students at the start of scholyear 1972-73. The language laboratory is a special room designed and used primarily for language learning with the aid of technological equipment, which will enable students to listen to the way words, phrases and sentences are pronounced, inflected and constructed with utmost clarity and high fidelity. The facilities also allow the teacher to listen in to each individual student without being detected, to make announcements to all students or to selected groups of students, and to carry on a private two-way conversation with any individual.

The laboratory can accommodate 40 students at one time. Each booth is a specially constructed table with high sides and front, shielding the occupant from the sight and sound of other students. The instructor has a large control desk called the console.

English and Spanish laboratory courses designed for college students will be offered. The course aims to improve aural-oral control of English and Spanish as well as increase the understanding of the nature and function of these languages. Emphasis will be given to the practice of correct English and Spanish through classroom participation and the use of pre-recorded materials.

TEXTBOOK DEPARTMENT

The Textbook Department of the College is located at the ground floor of Canisius Hall to serve the requirements of students. An assortment of paperbacks are also available. Students buy or rent the required textbooks. The department also provides mimeographing services.



HEALTH CLINIC

Both the College and the High School/Grade School departments maintain an infirmary with treatment room under the supervision of a full-time nurse. A dental clinic is also maintained. All students are given physical and dental examinations once a year by the school physician and the school dentist.

CREDIT UNION

An Ateneo de Davao Employees Cooperative Credit Union (AdDECCU) was organized to promote thrift among its academic and non-academic personnel and to create funds for loans. Members may get loans for productive and provident purposes, loans up to twice the amount of their fixed deposit. Short term loans are also extended. The AdDECCU has about 100 members.

CANTEEN

The campus canteen is open on class days from 7:00 A.M. to 8:00 P.M. to serve snacks to students, faculty and personnel of the school.

EDUCATIONAL MEDIA OFFICE

For the purpose of improving classroom instruction through efficient communication, the Ateneo de Davao established the Educational Media Office where audio-visual materials and equipment are available. The Media Office is located at the ground floor of the Canisius Hall.

PUAVC REGIONAL CENTER FOR SOUTHERN MINDANAO

The Philippine Universities Audio-Visual Center (PUAVC) for Southern Mindanao also has its offices at the ground floor of Canisius Hall. It serves member schools in Southern Mindanao particularly in professional and technical aspects of audio-visual education. It also lends films and movie projectors.

REGIONAL SCIENCE TEACHING CENTER (RSTC) for Eastern Mindanao

Over the past 15 years the Ateneo de Davao has achieved a certain degree of competence in the field of science and science education in terms of academic curricula as well as in its laboratory facilities. Aware of the role that these facilities play in the scientific formation of teachers and teachers-to-be of the region, the Ateneo de Davao since 1962 has been conducting summer institutes for science teachers. This Center, one of the five throughout the Philippines, is supported and assisted by the Philippine government through the National Science Development Board (NSDB), the UNESCO, the UNICEF, the University of the Philippines, the Ford Foundation and the Peace Corps Volunteers.

The objectives of the RSTC at the Ateneo de Davao are: 1) to continue and improve the various ongoing science education programs of the school and expand them when feasible and as required by circumstances. The RSTC will serve as the official center to integrate science education programs in the eastern section of Mindanao. 2) it will work closely with the undergraduate and graduate schools to provide high-quality pre-service training programs for science teachers, utilizing modern science curriculum materials, teaching aids, and equipment, 3) provide in-service training programs for science teachers in public and private schools of nine provinces of Eastern Mindanao. These include summer institutes, week-end seminars, academic institutes, and the like. 4) supervise and visit teacher-training programs operating in other colleges and schools within its jurisdiction; 5) operate an Information Clearing House and consultant services on science education topics; 6) conduct research on various aspects of science education particularly as it affects learning processes in the schools within its jurisdiction.





SCIENCE MATERIALS DEVELOPMENT (SMDC)

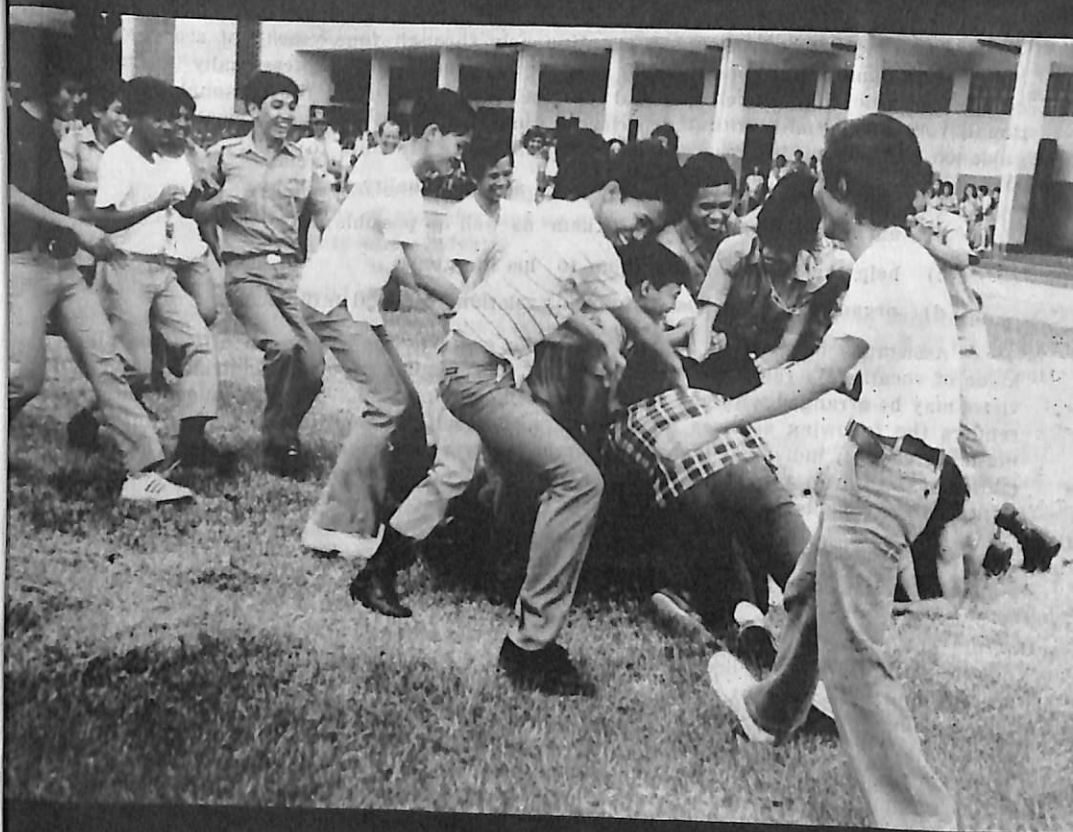
Toward the goal of providing "relevant and quality in-service programmes for science teachers" the Ateneo established the SMDC with a grant from the Fund for Assistance to Private Education. The SMDC was opened in October 1970 with the purpose of providing laboratory materials from Philippine resources at reasonable costs to schools in the assigned area of the Regional Science Teaching Center. Since its inauguration, the Center has produced physics kits for high schools relevant to the new curriculum pioneered by UPSEC and the national RSTC and sold at 50% subsidized cost. It has also established the feasibility of producing quantities of materials for Biology, General/Elementary Science and Elementary Mathematics.

With its continued experimentations, it is anticipated that the Center will have a central part in the expanding science programme for Eastern Mindanao which will be supported by national and international bodies.

ALUMNI

The Ateneo de Davao Alumni united in their own Association is a key unit in the larger Ateneo community of friendship and service. The Alumni helps the Ateneo academic community of students, teachers, employees and administrators. The Alumni helps the College to be closer to the problems and needs of the community and to serve better the real Davao problems and needs. The College helps the Alumni fostering in them the mature development of Catholic and Jesuit ideals sowed in their minds during their schooldays, encourages professional and Christian growth by various forms of adult education, even as it enlists their competence and Christian living in the service of the undergraduates. The Alumni cooperates with one another in a spirit of abiding mutual loyalty and help in need. The Alumni assists the College develop and to be understood by the people of Davao. They help new graduates to find positions.

Traditional among the Alumni activities are the Holy Week retreat, the Christmas week reunion; other meetings and activities are detailed in the Alumni Association's own charter.



College Life & Activities

While the College places primary emphasis on formal learning through instruction and study in an enriched curriculum, it clearly recognizes that, in the complete education of the whole person, the student has many other needs, religious, personal, social, for which it must make provision.

To serve these needs, the College offers a broad program of student personnel services. Within the framework of this non-instructional but nevertheless truly educational sphere of college life, the student has ready access to educational, spiritual, and vocational guidance. The multiple student activities not only offer outlets for the cultivation of his special interests and enthusiasms, but they expose him to real-life situations in which he finds a challenge to his initiative and leadership. The student personnel services program complements the student's formal learning process by providing such educational experiences as are not ordinarily found in the laboratory and lecture hall.

The Dean of Student Personnel Services administers all those phases of student life and activity which are not instructional.

GUIDANCE PROGRAM

From the time of enrolment, continuously through four years of study and eventual graduation and placement, a student is assisted by professionally trained counselors to develop self-reliance and the ability to profit from the personal, educational, vocational and spiritual experiences inherent in a college education. The guidance and counselling program aims to enable the students to:

- a) understand his abilities, interests, and personality traits;
- b) aid the student to develop them as well as possible;
- c) help the student relate them to his life goals;
- d) organize his life successfully in relation to social influences.

Assistance is given to all students who come to the guidance office for all kinds of vocational, religious, moral, personal and similar problems. Individual interviews may be arranged with any of the counselling personnel. The Guidance Center renders the following services for student and faculty: counselling, testing, informational service, individual inventory service referral and research services. The facilities of the Davao Association of Colleges and Schools (DACS) Educational Testing Center are available to the entire college community.

RELIGIOUS SERVICES

The formation of the whole person involves not only the pursuit of wisdom on the scientific and intellectual level, but the development of the person spiritually, socially and personally to strong religious convictions and a dedication to Christ and His teachings. Thus the College strives to give meaning to man's life and make his every action a living of his commitment to service as a member of the Christian community. Students, faculty and administrators are invited to share in the building up of this community, this fellowship of faith in which each member will exercise his own function but in which the basis of their unity is a sharing in the priesthood of Christ. To this end the College community strives to make visible its fellowship in the risen Christ in the following religious program:

- 1) Adequate opportunities for participation in the renewed liturgical life of the Church: daily Mass, confessions. A sufficient number of priests are available to assist in this expression of the community's identity.
- 2) Pastoral counseling carefully coordinated with the work done by the Counselors of the College. The non-Catholic students are also invited to avail themselves of this service in the spirit of ecumenism.
- 3) Relevant and productive religious organizations and encouragement of faculty and students to participate
- 4) The spiritual exercises of St. Ignatius: Retreats and Days of Recollection.
- 5) Discussion groups, seminars, lecture series on religious topics are promoted for students and faculty. Particular effort is exerted here to contribute to the general SPES orientation of the College by bringing out the relationship of its Spiritual aspect to the Social, Political and Economic concerns of the community for social justice and development.
- 6) Close cooperation with the theology faculty in the attempt to integrate the study of theology with religious practice and spiritual growth, relating these to the individual and social needs of the students as known to teachers, counselors, student affairs personnel and the coordinator of religious

activities and his assistants. Thus, faith which seeks understanding in Theology is a living faith, a living response of love of the community expressed and nurtured in all the aspects of this religious activities program.

In order to foster this integration of persons and of purposes in an academic community, the priest-Director of Religious activities does some teaching. In this way he is not considered an "outsider" by the faculty and his academic involvement creates a bond which is the basis and even the means of his relevance as a priest to the lives and problems of his colleagues and students.

- 7) Ministerial service to the various activities and class organizations to integrate their services and their cooperative efforts into the work of Christian community building and provide these communities with their supernatural source of life, motivation and unity.
- 8) Close cooperation with the Dean of Student Personnel Services: the Director of Religious Activities is consulted by the Dean of Student Personnel Services on the entire activities program in order to provide integration.
- 9) The presence of priests on the campus: As a sign of transcendence, the priest plays a mediating role in the College community. He embodies for that community the power it has to renew symbolically its commitment to live in hope based on the meaning it finds in itself as Christ the priest in the world. He mediates between the communal, intellectual, morally committed young and the traditional culture they are revolting against. He shows them the necessity of asking hard questions and finding answers closer to their own values. He brings people together in dialogue and his creative influence is more effective than at the center (administration) where the resistance to change and the tendency to make institutionalized justifications is greater.

PLACEMENT SERVICES

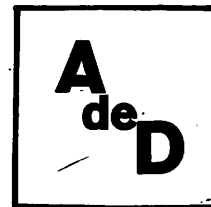
The College, through the Office of the Dean of Student Personnel Services aids its students in securing worthwhile employment. Demand for graduates of the College has been constant and growing and this placement service has been successful in securing permanent positions for students even before graduation.

STUDENT GOVERNMENT

Student government at the Ateneo de Davao College is centered in the Student Council. This organization is composed of elected representatives of the student body at large whose purpose is to coordinate student activity, to provide effective means of communication between the student body and the College authority and to strive to maintain and further the spirit and ideals of the Ateneo. For further details, please refer to the Student Handbook.

STUDENT ACTIVITIES

The College promotes varied athletic, social, humanistic, cultural and religious activities in the co-curriculars and extra-curricular spheres of student life. In the management of these activities, the College encourages a wide measure of student leadership as an additional means of developing self-reliance, individual initiative, and a sense of individual and group responsibility. Each class organization has a Faculty Moderator who is chosen by the student themselves. The Moderator assists the student members to achieve the objectives of the organization by advice, encouragement and direction.



ATHLETICS

The College engages in intercollegiate athletics aimed to improve students physically, develop qualities of leadership, stimulate school spirit and instill in them a desirable sense of true sportsmanship. The program includes basketball, softball, volleyball, ping-pong, chess and walkathon. Intramural competition is strongly encouraged and attention is given to those sports which afford participation for the greatest number of students.

The open Invitation Basketball Tournament and the Southern Mindanao Private Schools Meet (SMPRISAA) are some of the outside participation the teams are involved in.

ADMISSIONS

The Ateneo wishes to admit only those men and women who will be serious and successful students. That is why we insist on testing and interviewing each applicant. Every newcomer must undergo this process:

1. Present the required: credentials Form 138 or Transcript of Record. If you are transferring, a Certificate of Honorable Dismissal. Likewise the specified letters of recommendation.
2. Take the entrance examinations required of all newcomers.
3. Be interviewed by the College's Director of Admissions.

No one can get an Ateneo diploma without two full years of residence. Hence we do not accept students from other colleges into Senior Year at the Ateneo; only rarely into Junior Year. Every new applicant needs the approval of the Admissions Office.

ORIENTATION

The Ateneo has an orientation program to help new students to feel at home here and to make easy adjustments to college life. Freshmen and transferring students are required to be on the campus for orientation before the regular classes. Orientation also includes library guidance, talks on the traditions and regulations of the College and meetings with the various Deans. The newcomers are informed about opportunities for religious, academic, athletic and social activities.

HONORS PROGRAM

An Honors Program has been established in the College to give greater opportunities to the more intellectually endowed students to develop their potential on a more advanced, more challenging, more individualized level of instruction. Candidates for the Honors Program are selected at registration time. Norms are test results and scholastic records supplemented at times by recommendations and interviews.

GRANT-IN-AID

A grant-in-aid program is offered by the College of Arts & Sciences to students on the basis of financial need and capacity to meet the academic standards of the College. In line with our objectives to train future leaders of this community, geographical location of the grantee is also a basis for the scholarship.

TUITION & FEES

A looseleaf schedule of tuition and other fees is inserted somewhere in this Bulletin.

Students who enroll late disturb the early days of a semester, hurting their classmates and harming themselves. To discourage this abuse, Ateneo charges a fine for late registration: P7 for the 1st day, P8 for the 2nd and 3rd days, P9 for the 4th and 5th days and P10 from the 6th day on.

Tuition installments are usually paid on or before the 17th of each month. Where tuition and other fees are paid in full for a semester, a refund of 80% is made if a student withdraws during the first week after registration; 50% if he withdraws within the 2nd, 3rd or 4th week. No refund is made 30 days after registration.

ACADEMIC STANDARD

To succeed at the Ateneo de Davao College, a student need not be a genius but is expected to maintain the reasonable academic standards specified in the Manual of Regulations. The student must bear in mind that his specific purpose in college is to achieve academic competence. Academics must never be subordinated to any other pursuit. The standard set before him requires maturity, responsibility and the judicious use of all the opportunities offered to him by the College. He will acquire competence only in proportion to his personal initiative.

SUMMER SESSION

The College has a regular summer program of six weeks. It is intended for students who desire to make-up for academic deficiencies they have incurred in the past; for those who wish to earn advanced credits in order to lighten their load during the regular schoolyear, and for students from other colleges who wish to study here for the duration of the summer only.

Students who plan to attend only the summer session must present A Permit To Study from the school last attended. A complete transcript of record is not necessary. Students who plan to continue at the Ateneo beyond the summer term, however, must present an honorable dismissal and transcript from institution previously attended. New Freshmen may be accepted into the summer program provided they fulfill the entrance requirements.

EDUCATIONAL PROGRAMS

COURSE OFFERINGS

In accordance with its objectives and educational policies, the Ateneo de Davao College offers the following degree programs:

- * Master of Arts in Education (M.A.) — Administration & Supervision, Biology Education, Guidance & Counselling, Chemistry Education, Physics Education; English Education; Gen. Science Education
- * Bachelor of Laws (L.I.B.)
- * Bachelor of Arts (A.B.) — Major in Behavioural Science, English, Economics, Political Science
- * Bachelor of Science in Education (B.S.E.) — Major in Biology, English, Mathematics, General Science
- * Bachelor of Science (B.S.) — Major in Natural Science, Biology, Chemistry, Mathematics, Pre-Nursing
- * Bachelor of Science in Commerce (B.S.C.) — Major in Accounting
- * Bachelor of Science in Business Administration (B.S.B.A.) — Major in Banking & Finance, Management
- * Bachelor of Science in Secretarial Management (B.S.S.M.)

A brief description of the courses required for each degree is given in the succeeding pages.

N.B.

An MBA Extension Classes of the Ateneo de Manila will be offered for the schoolyear 1972-73.

Curriculum for a 4-year Secretarial Course leading to a Bachelor of Science in Secretarial Management (B.S.S.M.) degree is now being studied for possible offering next schoolyear.



GRADUATE SCHOOL

The graduate program of the Ateneo de Davao emphasizes content and recent advances in selected areas of education. It aims at a broad and deep professional foundation for educational leadership. It aims especially to help prospective instructors of undergraduate courses in teacher's colleges, schools of education and liberal arts colleges as well as teachers of secondary and elementary schools. The core courses form the foundation for student growth. Interdisciplinary electives are offered in certain areas. These courses are selected for their relevance to the educational needs of Davao communities.

At the moment the MA program offers concentrations in Biology education, Chemistry education, General Science education, Mathematics education, Physics education, English Education, Administration and Supervision, and Business Administration Education.

ADMISSION:

The Graduate Program is open to those with the Bachelor's degree in Education (BSE or BSEED) or its equivalent — A.B. with 18 units of undergraduate education subjects — from an institution of good standing. Two years of teaching experience are required of applicants who have not taken any course in practice teaching. An A.B. holder may be admitted to the Graduate Program if the applicant has at least two years teaching experience. Education courses may be taken at the Graduate level on an advanced approach. An area of concentration other than that of the Bachelor's degree will be allowed if the student fulfills the required 12-15 units of undergraduate subjects in his MA area. The Bureau does not allow undergraduate courses to be taken simultaneously with graduate courses. Only students who have obtained an average of B (2.0 or 85%) and have not received any conditioned or failing grade will be admitted to the graduate school.

DEGREE REQUIREMENTS:

The Master of Arts Program calls for the successful completion of a minimum of 39 units of graduate level work, including a thesis which must be approved by the Graduate School faculty. The candidate is also required to pass a written comprehensive examination and must successfully defend his thesis in an oral examination.

The maximum graduate load during a regular semester is 12 units and during the summer term, 6 units.

BACHELOR OF LAWS (L.I.B.)

FRESHMAN YEAR

| FIRST SEMESTER | UNITS | SECOND SEMESTER | UNITS |
|----------------------------|-------|---------------------------------------|-------|
| Persons & Family Relations | 4 | Obligations & Contracts | 5 |
| Philippine Political Law | 3 | Criminal Law II | 3 |
| Roman Law | 3 | Constitutional Law | 3 |
| Criminal Law I | 3 | Statutory Construction & Law Drafting | 2 |
| Legal Bibliography | 1 | Legal Accounting* | 1 |
| Seminar | 1 | Seminar | 1 |

SOPHOMORE YEAR

| | | | |
|--------------------------|---|---------------------------------|---|
| Property | 4 | Mercantile Law | 4 |
| Public Corporations | 2 | Credit Transaction | 3 |
| Torts & Damages | 2 | Administrative & Election Laws | 3 |
| Insurance | 2 | Partnership | 2 |
| Sales | 2 | Land Titles & Deeds | 2 |
| Criminal Procedure | 2 | Transportation & Public Service | 2 |
| Legal Philosophy** | 2 | Agency | 1 |
| Law on Natural Resources | 1 | Seminar | 1 |
| Seminar | 1 | | |

In each of the first four semesters a one unit seminar is added to the Government requirements. This seminar relates law questions to Catholic Theology.

*Optional for those who have completed at least 12 units of Accounting in any recognized School of Commerce.

**Optional for those who have already taken it in the preparatory law course.

JUNIOR YEAR

| | | | |
|----------------------------|---|---|---|
| Civil Procedure | 5 | Private Corporations | 4 |
| Labor Laws I | 4 | Evidence | 4 |
| Wills & Succession | 4 | Taxation II | 3 |
| Taxation I | 3 | Special Proceedings | 2 |
| Legal Forms & Conveyancing | 2 | International Law & World Organizations | 2 |
| | | Trial Technique | 2 |
| | | Labor Laws II (Social Legislation) | 1 |

SENIOR YEAR

| | | | |
|-----------------------|---|-----------------------|-----|
| Criminal Law Review | 5 | Remedial Law Review | 5 |
| Civil Law Review I | 4 | Mercantile Law Review | 5 |
| Political Law Review | 4 | Civil Law Review II | 4 |
| Practice Court I | 2 | Practice Court II | 2 |
| Medical Jurisprudence | 1 | Legal Ethics | 2 |
| Conflict of Laws | 2 | Legal Internship | 3 |
| Legal Internship | 3 | Tax Review | (1) |

COLLEGE OF LAW

The College of Law endeavors to produce Christian and competent men of the law who make Christ's idea of what a human life ought to be, both individual and social, an integral part of their own personal living. It aims to develop lawyers skilled in sound legal reasoning and broad human scholarship.

Since justice and just institutions are the noblest purposes of the legal profession, the Supreme Court of the Philippines solicitously fosters the study of law by strict regulations. Admission to the College of Law requires a bachelor's degree with at least 12 units in Spanish, 6 units in Mathematics and 18 units in Social Sciences. An applicant is also required to present his transcript of record, baptismal certificate and a letter of recommendation. In addition, the applicant is required to take the Program of Selective Admittance tests.

Transferees to the second, third and fourth years are not accepted except in some meritorious cases. The College is open to both male and female students.



COLLEGE OF ARTS & SCIENCES

The College of Arts and Sciences offers a broad curricula of study in the following fields: I. Business; II. Education; III. Humanities; IV. Natural Sciences; V. Social Sciences. All these curricula share a common core curriculum, and, except for the two-year pe-nursing program, all programs in these curricula fulfill the requirements for entrance into graduate school. All degree candidates must select, be accepted into, and satisfy the requirements of a major program in one of the following fields:

Accounting
Banking & Finance
Behavioral Science
Biology
Chemistry
Economics
English
General Science
Management
Mathematics
Natural Science
Political Science
Secretarial Management

FRESHMAN YEAR (Common for all Courses)

FIRST SEMESTER

| | UNITS |
|-------------------------------------|-------|
| Theo 11 Moral Theology | (3) |
| Engl. 11 Basic Communication | 3 |
| Engl. 12 Intro to Litt. Appreciat'n | 3 |
| Span 11 Elementary Spanish | 3 |
| Math 11 Modern Math I | 3 |
| N.S. 11 Intro. to Biolg'cal Sc. | 3 |
| Hist 11 Philippine History | 3 |
| ROTC 11 Military Science I | 3 |
| P.E. 1 Phys. Educ. (Women) | 1.5 |
| | 1 |

SECOND SEMESTER

| | UNITS |
|--------------------------------|-------|
| Theo 12 The Old Testament | (3) |
| Engl 13 Grammar & Composition | 3 |
| Engl 14 Expository Prose | 3 |
| Span 12 Intermediate Spanish | 3 |
| Math 12 Modern Math II | 3 |
| N.S. 12 Intro. to Physical Sc. | 3 |
| P.S. 22 Philippine Government | 3 |
| ROTC 22 Military Science II | 1.5 |
| P.E. 2 Phys. Educ. (Women) | 1 |

BACHELOR OF ARTS (A.B.)

SOPHOMORE YEAR

| | | | |
|--------------------------------|-----|--------------------------------|-----|
| Theo 21 Christ in the Gospels | (2) | Theo 22 Christ and His Church | (2) |
| Engl 21 Public Speaking | 3 | Engl 23 Advanced Composition | 3 |
| Engl 22 Intro. to Drama | 3 | Engl 24 Survey of Phil. Litt. | 3 |
| Span 21 Advanced Spanish | 3 | Span 22 Phil. Litt. in Spanish | 3 |
| Econ 11 Introductory Economics | 3 | Econ 12 Economic Analysis | 3 |
| BSci 21 Intro. Sociology | 3 | *Biol 102 General Zoology | 5 |
| Phys 11 College Physics I | 5 | *Chem 12 Gen. Inorganic Chem I | 5 |
| P.E. 3 Phys. Educ. (Women) | 1 | P.E. 4 Phys. Educ. (Women) | 1 |
| ROTC 21 Military Science III | 1.5 | ROTC 22 Military Science IV | 1.5 |

*Choose from either Biology or Chemistry

JUNIOR YEAR

| | | | |
|--------------------------------|-----|-------------------------------------|-----|
| Theo 103 The Sacraments | (2) | Theo 104 Mass, Eucharist, Community | (2) |
| Philo 103 Intro. to Philosophy | 3 | Philo 104 Philosophy of Man | 3 |
| Major Electives | 9 | Major Electives | 9 |
| Free Electives | 6 | Free Electives | 6 |
| P.E. Phys. Educ. (Men) | 1 | P.E. 2 Phys. Educ. (Men) | 1 |

SENIOR YEAR

| | | | |
|---------------------------------|-----|------------------------------------|-----|
| Theo 106 Preparing for Marriage | (2) | Theo 107 Church & the Modern World | (2) |
| Philo 106 Philosophy of God | 3 | Philo 107 Ethics | 3 |
| Hist 50 Rizal, His Life & Works | 3 | Philosophy Electives | 3 |
| Major Electives | 6-9 | Major Electives | 6-9 |
| Free Elective | 3 | Free Elective | 3 |
| P.E. 3 Phys. Educ. (Men) | 1 | P.E. Phys. Educ. (Men) | 1 |

NOTE: Land Reform is integrated in History 11 and Taxation is integrated in Political Science 22.

AB MAJOR REQUIREMENTS

| | |
|---------------------|----------|
| English — (Basic) | 24 units |
| (Major) | 36 units |
| Political Science | 42 units |
| Economics | 36 units |
| Behavioural Science | 39 units |

BACHELOR OF SCIENCE IN EDUCATION (B.S.E.)

SOPHOMORE YEAR

| First Semester | Units | Second Semester | Units |
|--------------------------------|-------|---------------------------------|-------|
| Theo 21 Christ in the Gospels | (2) | Theo 22 Christ and His Church | (2) |
| Engl 21 Public Speaking | 3 | Engl 23 Advanced Composition | 3 |
| Engl 22 Intro. to Drama | 3 | Engl 24 Survey of Phil. Litt. | 3 |
| Span 21 Advanced Spanish | 3 | Span 22 Phil. Litt. in Spanish | 3 |
| BSci 101 General Psychology | 3 | Educ 104 Educational Psychology | 3 |
| | 5 | Science Elective | 5 |
| Pili 11 Pilipino Gram. & Comp. | 3 | Pili 12 Pilipino Gram. & Litt. | 3 |
| ROTC 21 Military Science III | 1.5 | ROTC 22 Military Science IV | 1.5 |
| P.E. 3 Physical Educ. (Women) | 1 | P.E. 4 Physical Educ. (Women) | 1 |

JUNIOR YEAR

| | | | |
|---|-----|-------------------------------------|-----|
| Theo 103 The Sacraments | (2) | Theo 104 Mass, Eucharist, Community | (2) |
| Phil. 103 Intro. to Philosophy | 3 | Philo 104 Philosophy of Man | 3 |
| Educ. 100 Intro. to Education and Phil. Educ'l System | 3 | Educ 104 Educ. Meas. & Eval. | 3 |
| Educ. 103 Prin. & Methods of Teaching | 3 | Social Science Elective | 3 |
| BSci 21 Introductory Sociology | 3 | Major Electives | |
| Major Electives | | Minor Electives | |
| P.E. 1 Phys. Educ. (Men) | 1 | P.E. 2 Phys. Educ. (Men) | 1 |

SENIOR YEAR

| | | | |
|---------------------------------|-----|-----------------------------------|-----|
| Theo 106 Preparing for Marriage | (2) | Theo 107 Church & Modern World | (2) |
| Philo 107 Ethics | 3 | Educ 106 Adm. Supervision | 3 |
| Educ 102 Philo. of Education | 3 | Educ 107 Guidance & Counselling | 3 |
| Hist 50 Rizal, His Life & Works | 3 | Educ 109 Obs. & Practice Teaching | 9 |
| Major Electives | | Education Elective | |
| Minor Electives | | P.E. 4 Physical Educ (Men) | 1 |
| P.E. 3 Phys. Educ. (Men) | 1 | | |

Education Electives:

| | |
|---------------------------------|---------|
| Educ 120 Curriculum Development | 3 units |
| Educ 121 Educational Sociology | 3 units |

| Subject | Major | Minor |
|-----------------|-------|-------|
| Biology | 46 | |
| English | 60 | 26 |
| Mathematics | 36 | 27 |
| General Science | 46 | 18 |
| | | 26 |

BACHELOR OF SCIENCE MAJOR IN TEACHING OF MATHEMATICS

SOPHOMORE YEAR

| First Semester | Units | Second Semester | Units |
|-------------------------------|-------|-----------------------------|-------|
| Theo 21 Christ in the Gospels | (2) | Theo 22 Christ & His Church | (2) |
| Engl 21 Public Speaking | 3 | Engl 23 Adv. Composition | 3 |
| Span. 23 Adv. Spanish | 3 | Span 24 Phil. Lit. Span. | 3 |
| Math. 109 Math'cal Anal I | 6 | Math 110 Math'cal Anal. II | 6 |
| Phys 11 College Physics I | 5 | Phys. 12 College Physics II | 5 |
| BSci 101 General Psychology | 3 | Educ 104 Educ. Psychology | 3 |
| ROTC Military Science | 1.5 | ROTC Military Science | 1.5 |
| P.E. Physical Education | 1 | P.E. Physical Education | 1 |

NOTE: Land Reform is integrated in History 11 and Taxation is integrated in Political Science 22.

JUNIOR YEAR

| | | | |
|-------------------------------|-----|---------------------------------------|-----|
| Theo 103 The Sacraments | (2) | Theo 104 Mass, Eucharist, Community | (2) |
| Phil. 103 Intro. to Philo. | 3 | Philo 104 Philo. of Man | 3 |
| Educ. 102 Philo. of Education | 3 | Educ. 103 Principles of Teaching | 3 |
| Math 100 Set Theory | 3 | Math 117 Teaching of H.S. Mathematics | 3 |
| Math 101 Number Theory | 3 | Math 106 Linear Algebra | 3 |
| Math 107 Elem. Statistics | 3 | Math 112 Theory of Equations | 3 |
| Math 111 Math'cal Anal. III | 3 | Math 118 Seminar | 3 |
| P.E. Physical Education (Men) | 1 | P.E. Physical Education (Men) | 1 |

SENIOR YEAR

| | | | |
|---|-----|---|-----|
| Theo 106 Preparing for Marriage | (2) | Theo 107 Church & Modern World | (2) |
| Philo 106 Philosophy of God | 3 | Philo 107 Ethics | 3 |
| Hist 50 Rizal's Life | 3 | Educ. 109 Observation and Practice Teaching | 9 |
| Educ. 105 Educ. Measurements and Evaluation | 3 | Math 115 Adv. Calculus II | 3 |
| Math 102 Modern Algebra | 3 | Math 119 Special Problem in Mathematics | 2 |
| Math 113 Differential Equations | 3 | P.E. Physical Educ. (Men) | 1 |
| Math 114 Adv. Calculus I | 3 | | |
| P.E. Physical Educ. (Men) | 1 | | |

BACHELOR OF SCIENCE MAJOR IN TEACHING OF CHEMISTRY

SOPHOMORE YEAR

| First Semester | | Units | Second Semester | | Units | | |
|----------------|-----|-----------------------|-----------------|-------|-------|----------------------|-----|
| Theo | 21 | Christ in the Gospels | (2) | Theo | 22 | Christ & His Church | (2) |
| Engl | 21 | Public Speaking | 3 | Engl | 23 | Adv. Composition | 3 |
| Span. | 23 | Adv. Spanish | 3 | Span. | 24 | Phil. Lit. Span. | 3 |
| Chem. | 12 | Gen. Chemistry I | 5 | Chem. | 14 | Gen. Inorg. Chem. II | 5 |
| Phys. | 11 | College Physics I | 5 | Phys. | 12 | College Physics II | 5 |
| BSci | 101 | Gen. Psychology | 3 | Educ. | 104 | Educ. Psychology | 3 |
| ROTC | | Military Science | 1.5 | ROTC | | Military Science | 1.5 |
| P.E. | | Physical Education | 1 | P.E. | | Physical Education | 1 |

NOTE: Land Reform is integrated in History 11 and Taxation is integrated in Political Science 22.

JUNIOR YEAR

| | | | | | | | |
|-------|-----|--------------------------|-----|-----------|-----------------------|----------------------------|-----|
| Theo | 103 | The Sacraments | (2) | Theo | 104 | Mass, Eucharist, Community | (2) |
| Philo | 103 | Intro. to Philosophy | 3 | Philo | 104 | Philo of Man | 3 |
| Chem | 21 | Organic Chemistry I | 5 | Chem. 115 | Teaching H.S. Chem | 5 | |
| Math | 107 | Elem. Statistics | 3 | Chem. 108 | Anal. Chem. II | 5 | |
| Educ | 102 | Philo. of Education | 3 | Chem. 116 | Seminar | 3 | |
| P.E. | | Physical Education (Men) | 1 | Educ. 103 | Principle of Teaching | 3 | |
| | | | | P.E. | Physical Educ. (Men) | 1 | |

SENIOR YEAR

| | | | | | | | |
|-------|-----|-----------------------------------|-----|----------|-----------------------------------|-------------------------|-----|
| Theo | 106 | Preparing for Marriage | (2) | Theo | 107 | Church and Modern World | (2) |
| Philo | 106 | Philo of God | 3 | Philo | 107 | Ethics | 3 |
| Hist | 50 | Rizal's Life | 3 | Chem 117 | Special Problem in Chem. Educ. | 2 | |
| Chem. | 101 | Physical Chem I | 5 | Educ 109 | Observation and Practice Teaching | 9 | |
| Chem. | | (elective) | 5 | P.E. | Physical Educ. (Men) | 1 | |
| Educ | 105 | Educ. Measurements and Evaluation | 3 | | | | |
| P.E. | | Physical Education (Men) | (1) | | | | |

BACHELOR OF SCIENCE MAJOR IN NATURAL SCIENCE (B.S.N.S.)

SOPHOMORE YEAR

| First Semester | | Units | Second Semester | | Units | | |
|----------------|-----|-------------------------|-----------------|------|-------|-------------------------|-----|
| Theo | 21 | Christ in the Gospels | (2) | Theo | 22 | Christ and His Church | (2) |
| Engl | 21 | Public Speaking | 3 | Engl | 23 | Adv. Composition | 3 |
| Span | 23 | Adv. Spanish | 3 | Span | 24 | Phil. Lit. Span. | 3 |
| Phys | 11A | College Physics I | 5 | Phys | 12B | College Physics II | 5 |
| Chem | 12 | Gen. Inorg. Chemistry I | 5 | Chem | 14 | Gen. Inor. Chemistry II | 5 |
| Math | 107 | Elem. Statistics | 3 | BSci | 101 | General Psychology | 3 |
| ROTC | | Military Science | 1.5 | ROTC | | Military Science | 1.5 |
| P.E. | 3 | Physical Education | 1 | P.E. | 4 | Physical Education | 1 |

NOTE: Land Reform is integrated in History 11 and Taxation is integrated in Political Science 22.

JUNIOR YEAR

| | | | | | | | |
|-------|-----|--------------------------|-----|-------|-----|----------------------------|-----|
| Theo | 103 | The Sacraments | (2) | Theo | 104 | Mass, Eucharist, Community | (2) |
| Philo | 103 | Intro. to Philosophy | 3 | Philo | 104 | Philosophy of Man | 3 |
| Hist | | (elective) | 3 | BSci | | (elective) | 3 |
| Biol | 101 | Gen. Botany | 5 | Biol | 102 | Gen. Zoology | 5 |
| Chem | 21 | Organic Chem. I | 5 | Chem | 24 | Anal. Chem. II | 5 |
| P.E. | | Physical Education (Men) | 1 | P.E. | | Physical Education (Men) | 1 |

SENIOR YEAR

| | | | | | | | |
|-------|-----|--------------------------|-----|----------|-----------------------------------|--------------------------------|-----|
| Theo | 106 | Preparing for Marriage | (2) | Theo | 107 | Church & Modern World | (2) |
| Philo | 106 | Philo. of God | 3 | Philo | 107 | Ethics | 3 |
| Hist | 50 | Rizal's Life | 3 | Chem | 117 | Special Problem in Chem. Educ. | 2 |
| Biol | 103 | Comp. Vert. Anatomy | 5 | Educ 109 | Observation and Practice Teaching | 9 | |
| Biol | 111 | Histology | 5 | P.E. | Physical Educ. (Men) | 1 | |
| Biol | 113 | General Physiology | 5 | | | | |
| P.E. | | Physical Education (Men) | 1 | | | | |

| FIRST YEAR | | | |
|-------------------------------------|-------|-------------------------------------|-------|
| First Semester | Units | Second Semester | Units |
| Theo 11 Moral Theology | (3) | Theo 12 Old Testament | (3) |
| Engl. 11 Basic Communication | 3 | Engl 13 Grammar and Composition | 3 |
| Engl. 12 Intro to Litt. Appreciat'n | 3 | Engl 14 Expository Prose | 3 |
| Span 11 Elementary Spanish | 3 | Span 12 Intermediate Spanish | 3 |
| Math 11 Modern Mathematics I | 3 | Math 12 Modern Mathematics II | 3 |
| N.S. 11/12 Biological/Physical Sens | 3 | N.S. 12/11 Physical/Biological Sens | 3 |
| * Hist 11/PS 22 Phil Hist/Gov't. | 3 | * P.S. 22/Hist 11 Phil Gov't/Hist | 3 |
| Bus 11 Fundamentals of Typing | 3 | Bus 12 Speed Typing | 3 |
| P.E. Phys. Educ.(Women Only) | 1 | P.E. Phys. Educ.(Women Only) | 1 |
| ROTC Military Science | 1.5 | ROTC Military Science | 1.5 |

| SECOND YEAR | | | |
|--------------------------------|-----|-------------------------------------|-----|
| Theo 21 Christ in the Gospels | (2) | Theo 22 Christ and His Church | (2) |
| Engl 21 Public Speaking | 3 | Engl 24 Survey of Phil Literature | 3 |
| Span 21 Advanced Spanish | 3 | Engl 25 Business English | 3 |
| Phys 11 College Physics I | 5 | Span 22 Selected Writings | 3 |
| Math 5A Mathematical Analysis | 3 | **Bio102/Chem 12 GenZool/Inorg Chem | 5 |
| Econ 11 Introductory Economics | 3 | Math 107 Business Statistics | 3 |
| Bus 21 Business Organizations | 3 | Econ 12 Economic Analysis | 3 |
| P.E. Phys. Educ. (Women Only) | 1 | P.E. Phys. Educ. (Women Only) | 1 |
| ROTC Military Science | 1.5 | ROTC Military Science | 1.5 |

| THIRD YEAR | | | |
|---------------------------------|-----|-------------------------------------|-----|
| Theo 103 The Sacraments | (2) | Theo 104 Mass, Eucharist, Community | (2) |
| Engl 22 Intro to Drama | 3 | Phi 104 Philosophy of Man | 3 |
| Phi 103 Intro to Philosophy | 3 | Acc 22 Partnership & Corp Acct | 3 |
| Acc 21 Fundamentals of Acctg. | 6 | Acc 31 Theory of Accounts | 3 |
| Law 101 Obligations-Contracts | 3 | Law 102 Partnership &Corp Law | 3 |
| Hist 50 Rizal, His Life & Works | 3 | Econ 121 Money and Banking | 3 |
| BSci 21 Introductory Sociology | 3 | Econ 121 Money and Banking | 3 |
| P.E. Phys. Educ. (Men Only) | 1 | Social Science Electives | 6 |
| | | P.E. Men | 1 |

| FOURTH YEAR | | | |
|---|-----|--|-----|
| Theo 106 Preparing for Marriage | (2) | Theo 107 Church & the Mod. World | (2) |
| Phi 106 Philosophy of God | 3 | Phi 107 Ethics | 3 |
| Law 111 Negotiable Instruments | 3 | Law 112 Property, Agency & Sales | 3 |
| Econ 191 Development Economics | 3 | Econ 193 Philippine Economy | 3 |
| Business Professional electives (Bkg. & Finance, Management, or Acctg.) | 6 | Philo electives | 3 |
| Social Science electives | 6 | Business Professional electives (Bkg. & Finance, or Management, or Acctg.) | 6 |
| P.E. Phys. Educ. (Men Only) | 1 | Social Science electives | 3 |
| | | P.E. Men | 1 |

| FIFTH YEAR | | | |
|--|---|---|---|
| Bus 121 Managerial Economics | 3 | Bus 122 Bus Policies & Problems | 3 |
| Law 121 Income Taxes | 3 | Law 122 Bus & Misc Taxes | 3 |
| Business Professional electives (Bkg. & Finance, or Management, or Acctg.) | 9 | Business Professional electives (Bkg. & Finance, Management, or Acctg.) | 9 |
| Social Science electives | 6 | Social Science electives | 3 |
| | | BSci 120 Industrial Sociology | 3 |

* Land Reform is integrated in History 11 and Taxation in Political Science 22.
 ** Choose from either Biology or Chemistry.

MAJOR IN ACCOUNTING (B.S.C.)

| FIRST YEAR | | | |
|-------------------------------------|-------|-----------------------------------|-------|
| First Semester | Units | Second Semester | Units |
| Theo 11 Intro. Theology | (3) | Theo 12 Old Testament | (3) |
| Engl 11 Basic Communication | 3 | Engl 13 Grammar and Composition | 3 |
| Engl 12 Intro. to Literary Appre. | 3 | Engl 14 Expository Prose | 3 |
| Span 11 Introductory Spanish | 3 | Span 12 Intermediate Spanish | 3 |
| Math 11 Modern Math (Coll. Algebra) | 3 | Math 12 Modern Math (Trigo) | 3 |
| NS 11/12 Introduction to Science | 3 | NS 11/12 Introduction to Science | 3 |
| His11/PS22 Phil Hist/Government | 3 | His 11/PS 22 Phil Hist/Government | 3 |
| ROTC Military Science | 1.5 | ROTC Military Science | 1.5 |
| P.E. Phys. Educ. (Women Only) | 1 | PE Phys. Educ. (Women Only) | 1 |
| Typ 1 Fundamentals of Typing | 3 | Typ 2 Speed Typewriting | 3 |

| SECOND YEAR | | | |
|-------------------------------|-----|-------------------------------|-----|
| Theo 21 Christ in the Gospel | (2) | Theo 22 Christ & His Church | (2) |
| Engl 21 Public Speaking | 3 | Engl 23 Advanced Composition | 3 |
| Span 21 Advanced Spanish | 3 | Span 22 Selected Writings | 3 |
| Econ 11 Intro Economics | 3 | Engl 25 Business English | 3 |
| Math 5A Mathematical Analysis | 3 | Econ 12 Economic Analysis | 3 |
| Bus 21 Bus. Organization | 6 | Math 107 Statistics | 3 |
| Acc 21 Fundamentals of Acctg. | 1 | Acc 22 Part. & Corp. Acctg. | 3 |
| PE Physical Educ (Men) | 1.5 | Acc 31 Theory of Accounts | 3 |
| ROTC Military Science | | P.E. Phys. Educ. (Women Only) | 1 |
| | | ROTC Military Science | 1.5 |

| THIRD YEAR | | | |
|---|-----|-------------------------------------|-----|
| Theo 103 The Sacraments | (2) | Theo 104 Mass, Eucharist, Community | (2) |
| Phi 103 Intro to Philosophy | 3 | Phi 104 Philosophy of Man | 3 |
| Law 101 Obligations & Contracts | 6 | Law 102 Part. & Corporation | 3 |
| Acc 101 Intermediate Acctg | 3 | Law 102 Part. & Corporation | 3 |
| Bsci 21 Intro Sociology | 3 | Acc 102 Cost Accounting | 6 |
| Econ 191 Development Economics | 3 | Econ 121 Money & Banking | 3 |
| Hist 50 Life, Works & Writings of Rizal | 3 | Econ 192 Philippine Economy | 3 |
| PE Physical Educ (Men) | 1 | Bsci 120 Industrial Sociology | 3 |
| | | PE Physical Educ (Men) | 1 |

| FOURTH YEAR | | | |
|------------------------------------|-----|----------------------------------|-----|
| Theo 106 Preparing for Marriage | (2) | Theo 107 Church & Modern World | (2) |
| Phi 106 Philosophy of God | 3 | Phi 107 Ethics | 3 |
| Law 111 Negotiable Instruments | 3 | Law 112 Property, Agency & Sales | 3 |
| Bus 121 Management Economics | 3 | Law 112 Property, Agency & Sales | 3 |
| Law 121 Income Taxes | 3 | Bus 122 Bus. Policies & Problems | 3 |
| Acc 121 Auditing Principles & Prob | 6 | Law 122 Bus. & Misc. Taxes | 3 |
| Acc 131 Acctg. Problems I | 3 | Law 122 Bus. & Misc. Taxes | 3 |
| P.E. Physical Educ (Men) | 1 | Acc 132 Acctg Probs II | 3 |
| | | Acc 141 Controllership | 3 |
| | | Acc Seminar & Research Paper | 3 |
| | | PE Physical Educ (Men) | 1 |

| FIFTH YEAR | | | |
|-------------------------------|---|--------------------------------|---|
| Public Acctg. Practice I | 3 | Public Accounting Practice III | 3 |
| Public Accounting Practice II | 3 | Management Advisory Service II | 3 |

BACHELOR OF SCIENCE IN BUSINESS ADMINISTRATION (B.S.B.A.)

FIRST YEAR (Common)

First Semester

| | | | |
|------|----------|----------------------------|-----|
| Theo | 11 | Moral Theology | (3) |
| Engl | 11 | Basic Communication | 3 |
| Engl | 12 | Intro to Literary Appre | 3 |
| Span | 11 | Introductory Spanish | 3 |
| Math | 11 | Modern Math (Coll Algebra) | 3 |
| NS | 11/12 | Introduction to Science | 3 |
| His | 11/PS 22 | Phil Hist/Government | 3 |
| Typ | 1 | Fundamentals of Typing | 3 |
| ROTC | | Military Science | 1.5 |
| P.E. | | Phys. Educ. (Women) | 1 |

Second Semester

| | | | |
|------|----------|--------------------------|-----|
| Theo | 12 | Old Testament | (3) |
| Engl | 13 | Grammar and Composition | 3 |
| Engl | 14 | Expository Prose | 3 |
| Span | 12 | Intermediate Spanish | 3 |
| Math | 12 | Modern Math (Trigo) | 3 |
| NS | 11/12 | Introduction to Science | 3 |
| His | 11/PS 22 | Phil Hist/Government | 3 |
| Typ | 2 | Speed Typewriting | 3 |
| ROTC | | Military Science | 1.5 |
| P.E. | | Phys. Educ. (Women Only) | 1 |

SECOND YEAR (Common)

| | | | |
|------|----|------------------------|-----|
| Theo | 21 | Christ in the Gospel | (2) |
| Engl | 21 | Public Speaking | 3 |
| Span | 21 | Advanced Spanish | 3 |
| Econ | 11 | Intro Economics | 3 |
| Acc | 21 | Fundamentals of Acctg | 6 |
| Math | 54 | Mathematical Analysis | 3 |
| Bus | 21 | Business Organizations | 3 |
| P.E. | | Physical Educ (Women) | 1 |
| ROTC | | Military Science | 1.5 |

| | | | |
|------|-----|-----------------------|-----|
| Theo | 22 | Christ & His Church | (2) |
| Engl | 23 | Advanced Composition | 3 |
| Engl | 25 | Business English | 3 |
| Span | 22 | Selected Writings | 3 |
| Acc | 22 | Part. & Corp. Acctg. | 3 |
| Acc | 31 | Theory of Accounts | 3 |
| Econ | 12 | Economic Analysis | 3 |
| Math | 107 | Business Statistics | 3 |
| PE | | Physical Educ (Women) | 1 |
| ROTC | | Military Science | 1.5 |

(B.S.B.A.) MAJOR: BANKING & FINANCE

THIRD YEAR

| | | | |
|------|-----|--------------------------------|-----|
| Theo | 103 | The Sacraments | (2) |
| Phi | 103 | Intro to Philosophy | 3 |
| Law | 101 | Obligations & Contracts | 3 |
| Bsci | 21 | Introductory Sociology | 3 |
| Econ | 191 | Development Economics | 3 |
| Fin | 101 | Phil Financial Institute | 3 |
| Fin | 111 | Financial Accounting | 3 |
| Hist | 50 | Life, Works & Writing of Rizal | 3 |
| P.E. | | Physical Educ (Men) | 1 |

| | | | |
|------|-----|----------------------------|-----|
| Theo | 104 | Mass, Eucharist, Community | (2) |
| Phi | 104 | Philosophy of Man | 3 |
| Law | 102 | Part. & Corporation | 3 |
| Econ | 121 | Money & Banking | 3 |
| Econ | 192 | Philippine Economy | 3 |
| Fin | 102 | Central Banking | 3 |
| Fin | 112 | Financing Management | 3 |
| Bsci | 120 | Industrial Sociology | 3 |
| PE | | Physical Education (Men) | 1 |

NOTE: Land Reform is integrated in History 11 and Taxation is integrated in Political Science 22.

FOURTH YEAR

First Semester

| | | | |
|------|-----|------------------------|-----|
| Theo | 106 | Preparing for Marriage | (2) |
| Phi | 106 | Philosophy of God | 3 |
| Law | 111 | Negotiable Instruments | 3 |
| | 121 | Managerial Economics | 3 |
| | 121 | Income Taxes | 3 |
| | | Cooperative Banking | 3 |
| | | International Trade | 3 |
| | | Investment | 3 |
| | | | 1 |

Units

Second Semester

| | | | |
|------|-----|-------------------------------|-----|
| Theo | 107 | Church & Modern World | (2) |
| Phi | 107 | Ethics | 3 |
| Law | 112 | Property, Agency & Sales | 3 |
| Bus | 122 | Bus Policies & Problems | 3 |
| Law | 122 | Bus & Misc. Taxes | 3 |
| Fin | 122 | Public Finance | 3 |
| Fin | 131 | Credit Principles & Practices | 3 |
| Fin | 151 | Sem & Research Paper | 3 |
| P.E. | | Physical Education (Men) | 1 |

Units



B.S.B.A. MANAGEMENT MAJOR

THIRD YEAR

| | | | |
|------|-----|---------------------------------|-----|
| Theo | 103 | The Sacraments | (2) |
| Phi | 103 | Intro to Philosophy | 3 |
| Law | 101 | Obligations & Contracts | 3 |
| Bsci | 21 | Introductory Sociology | 3 |
| Econ | 191 | Development Economics | 3 |
| Mgmt | 101 | Basic Marketing | 3 |
| Mgmt | 111 | Managerial Accounting | 3 |
| Hist | 50 | Life, Works & Writings of Rizal | 3 |
| P.E. | | Physical Educ (Men) | 1 |

| | | | |
|------|-----|----------------------------|-----|
| Theo | 104 | Mass, Eucharist, Community | (2) |
| Phil | 104 | Philosophy of Man | 3 |
| Law | 102 | Part. & Corporation | 3 |
| Econ | 121 | Money & Banking | 3 |
| Econ | 192 | Philippine Economy | 3 |
| Mgmt | 102 | Advanced Marketing | 3 |
| Mgmt | 112 | Financial Management | 3 |
| Bsci | 120 | Industrial Sociology | 3 |
| P.E. | | Physical Educ (Men) | 1 |

FOURTH YEAR

| | | | |
|------|-----|------------------------|-----|
| Theo | 106 | Preparing for Marriage | (2) |
| Phi | 106 | Philosophy of God | 3 |
| Law | 111 | Negotiable Instruments | 3 |
| Bus | 121 | Managerial Economics | 3 |
| Law | 121 | Income Taxes | 3 |
| Mgmt | 121 | Personnel Management | 3 |
| Mgmt | 131 | Prod. Management I | 3 |
| Mgmt | 141 | Investments | 3 |
| P.E. | | Physical Educ (Men) | 1 |

| | | | |
|------|-----|--------------------------|-----|
| Theo | 107 | Church & Modern World | (2) |
| Phi | 107 | Ethics | 3 |
| Law | 112 | Property, Agency & Sales | 3 |
| Bus | 122 | Bus. Policies & Problems | 3 |
| Law | 122 | Bus. & Misc. Taxes | 3 |
| Mgmt | 122 | Labor & Ind. Relations | 3 |
| Mgmt | 132 | Prod. Management II | 3 |
| Mgmt | 151 | Sem & Research Paper | 3 |
| P.E. | | Physical Educ (Men) | 1 |

NOTE: Land Reform is integrated in History 11 and Taxation is integrated in Political Science 22.

VERTICAL
FILE
-OR REFERENCE ONLY
COLLEGE LIBRARY
ATENEO DE DAVAO



HIGH SCHOOL

Four hundred years of teaching experience have convinced Jesuit educators that leaders are not born, but made. With this conviction, all Jesuit schools in the Philippines are dedicated to developing qualities of leadership in young Filipinos.

For this purpose the Ateneo de Davao High School was founded in 1948. For this same purpose today — in spite of changing times and the increasing restlessness of youth today — the Ateneo continues to demand three qualities from its students: excellence in studies, strength of character, and dedication to God and country.

Since the express purpose of the Ateneo is to train young men for future leadership in their chosen careers, the studies pursued in the High School Department are not easy. They are not meant to be. But neither are they so difficult that the average boy who works diligently need be discouraged. For it is not brilliance which is the key to success in the Ateneo, but fidelity to daily assignments, and a mature sense of responsibility in performing one's work.

A Report Card (Form 138) valid for transfer, giving evidence of graduation from a recognized elementary school, is required of all applicants to the First Year High School. Generally, transferees into the upper years are not accepted. However, at the discretion of the Admissions Committee, transferees with high academic marks and satisfactory disciplinary record may be accepted into the second or third year. All new students take the placement exams to determine the section where each student can work at his best. Admission into the next school year will depend on the academic and disciplinary performance of the previous year.

GRADE SCHOOL

Kindergarten, First to Fourth grade is open to both boys and girls. Grades V & VI are offered exclusively for boys.

A good foundation in the basic skills, attitudinal virtues and knowledge based on true Christian ideals is the preparation a pupil needs for high school, for college and for life. The Principal and Faculty of the Grade School are pledged to the objective of developing the student in all aspects during his formative years.